



FALP CANCER INSTITUTE

How the accreditation process
helps us improve.

Cristian Ayala M.



CHILE

- **Long Country: 4,270 km**
(Equivalent north Sweden to south of Greece)
- **Population: 20 millions**
- **Middle income country**
- **Modern Capital: Santiago**
- **Centralize country: 7 millions in Santiago Region**



A DREAM STARTING IN 1954

“To provide comprehensive and excellent care to cancer patients, especially the most unprotected, along with promoting cancer prevention and fighting it by all means.”

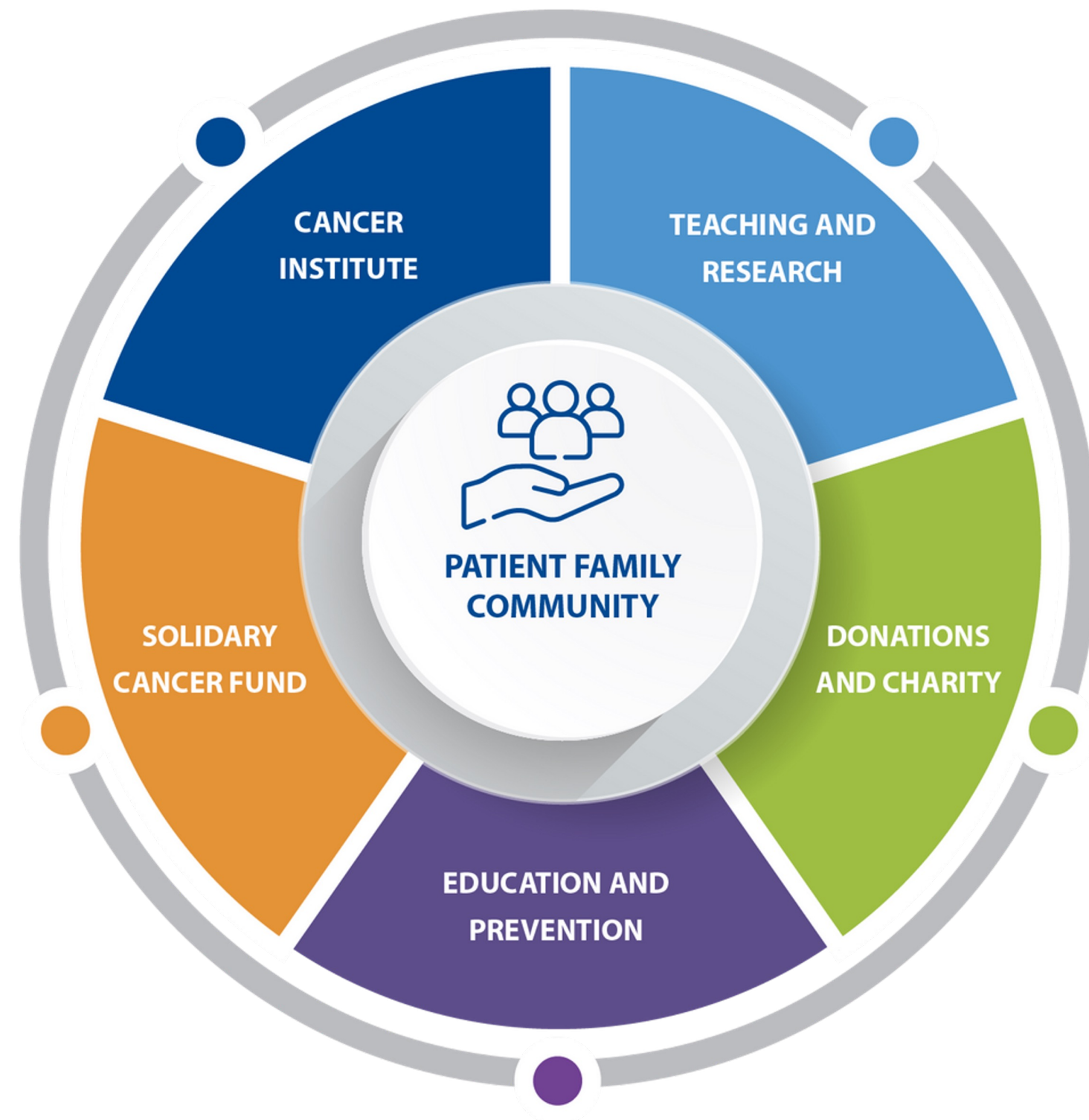
Ana Ross Arturo López Pérez’s widow.
Valparaíso, 1885 - Paris, 1974.

Not for Profit Private Foundation



SOCIAL HEALTHCARE MODEL

ACCESS TO THE MOST UNPROTECTED



**Cancer Institute:
Comprehensive Care**



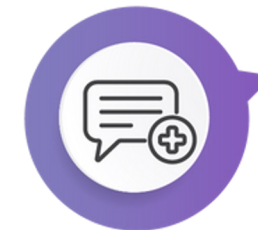
**Cancer Research
and Education**



**Solidary Fund:
1.000.000 Beneficiaries (9 EUR)**



**Charity and Support for most
unprotected
50.000 recurrent donor (6 EUR)**



**Education and Prevention
for patients, families and
communities**



ACCREDITATION: FALP OECI CANCER CENTRE



We joined OECI in 2019 with the firm belief that integrating OECI best practices will impact the quality of patient care.

Commitment and involvement of the entire upper management in a Steering Committee.

- President – Alfredo Comandari
- Chief Executive Officer – Cristian Ayala
- Chief Operating Officer – Marcos Simpson
- Scientific Director – Christian Caglevic
- Chief Medical Director – Ricardo Morales
- Director OECI Program – Silvia Basso



ACCREDITATION: FALP - OECI CANCER CENTRE

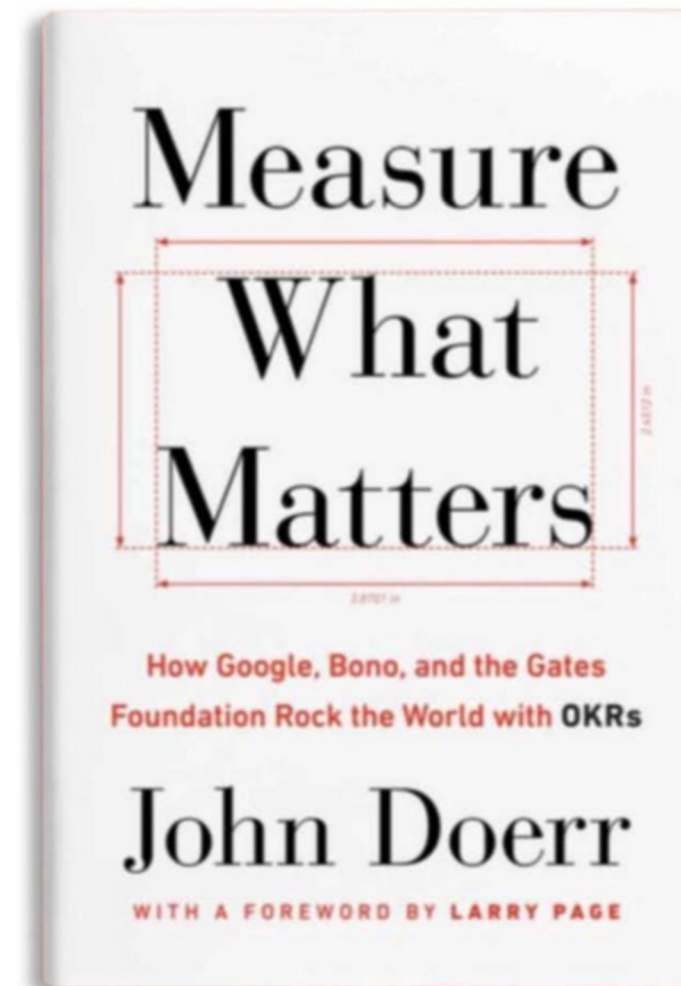
Chapter	Compliance 2019 Gap Analysis	Compliance 2023 Peer Review Auditores OECI	Delta
Governance	45,5	81,8	36,3
Organization of quality systems	44,9	78,9	34,0
Patient empowerment	29,0	55,3	26,3
Multidisciplinarity	18,5	82,1	63,6
Prevention and early detection	30,8	61,5	30,8
Diagnosis	29,0	75,0	46,1
Treatment	42,1	84,2	42,1
Research	9,4	79,3	69,8
Education and training	55,6	79,0	23,4
Total	33,0	77,1	44,1



1.- GOVERNANCE

Strategic Plan 2022 -2025

- Cancer Institute Strategic Plan.
- Cancer Research Department Strategic Plan.
- Solidarity Cancer Fund Strategic Plan.
- Donation and Charity Strategic Plan.
- Cancer education and Prevention Strategic Plan.



Adoption of OKR

To monitor our strategy's progress, we've chosen the Objectives and Key Results (OKR) method, establishing yearly goals and quarterly reviews.



2.- ORGANISATION OF QUALITY SYSTEMS



- Establishment of a Quality Improvement and Risk Management Department for Proactive Risk Assessment and Prevention.
- Rollout of the Quality and Safety Dashboard.
- Initiative to Enhance the Tumor Registry.
- Implementation of Latency Monitoring Panels.



3.- PATIENT INVOLVEMENT AND EMPOWERMENT

- Create a Patient Empowerment and Participation Department.
- Implementing a Patient Council.



13 Octubre

2 MUJERES CON CÁNCER DE mama

CONGRESO CHILENO

Club Palestino | Av. Pdte. Kennedy 9351, Las Condes



CONSEJO DE PACIENTES Y FAMILIARES FALP



4.- MULTIDISCIPLINARITY

- Establishment of Clinical Pathways.
- Development of Quality Indicators for Each Multidisciplinary Team.

Clinical Pathways



5.- PREVENTION AND EARLY DETECTION

- Establishment of a Prevention and Early Detection Department.
- Early Detection Programme for Patients.
- Launch of an Internal and Public No-Smoking Campaign.



6.- DIAGNOSIS

- Formation of a Molecular Multidisciplinary Team.
- Deployment of NGS Panels for Hematologic and Solid Tumors.

Genetic Sequencer **DNBSEQ-G99**



Physicians trained at the
Catalan Institute of Oncology



Online platform to
support the
interpretation and
classification of
genetic variants



7.- TREATMENT

- Development of Advanced Practice Nursing Roles.
- Establishment of a Survivorship Program.



SEGUIMIENTO ONCOLÓGICO FALP

Estimada comunidad,

Los importantes avances diagnósticos y terapéuticos en el campo de la oncología nos enfrentan de manera permanente como Institución a nuevos desafíos. Actualmente, los equipos médicos atienden a un número creciente de pacientes que han culminado la etapa curativa de su tratamiento, sin embargo tienen nuevas necesidades que deben ser atendidas.

Es por ello que, desde la Subdirección de Medicina Interna, se ha creado el **Programa de Seguimiento Oncológico**, que tiene como objetivo atender a este grupo de pacientes de manera integral, junto con las distintas unidades de apoyo clínico: Nutrición, Kinesiología, Terapia Ocupacional, Psicooncología, Terapias Complementarias, Geriátrica y Fonoaudiología.



PROGRAMA DE SEGUIMIENTO DE PACIENTES ONCOLÓGICOS
Un aporte a la calidad de vida de nuestros pacientes



falp Juntos contra el cáncer

EL MERCURIO emol.

ESTAMOS COMPROMETIDOS CON LA PROMOCIÓN DEL AUTOCUIDADO, PREVENCIÓN Y DETECCIÓN TEMPRANA DEL CÁNCER, PILARES FUNDAMENTALES DE NUESTRO ROL SOCIAL.

PARA PACIENTES QUE HAN TERMINADO SU TRATAMIENTO CURATIVO:
FALP es pionera con Programa de Seguimiento Oncológico

Revisa un video sobre este tema con nuestros especialistas. Escanea el código QR acercando su celular con la cámara encendida.

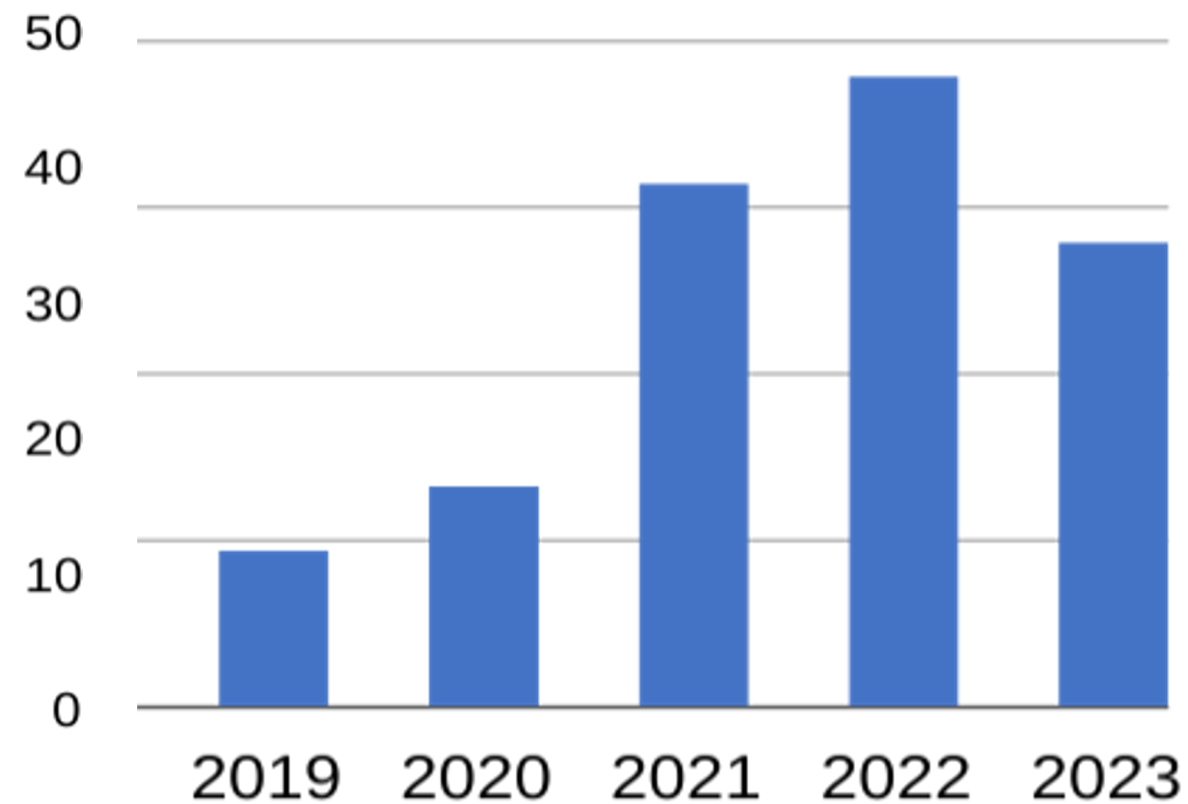
Después de haber concluido el tratamiento curativo, el paciente del Programa de Seguimiento Oncológico FALP comienza a atenderse en una unidad que le proporciona acompañamiento integral.

Dr. Rubén Soto, subdirector médico de FALP. Dra. María Belén Moscoso, coordinadora del Programa de Seguimiento Oncológico de FALP. Dr. Basir Chahuán, jefe de Cirugía Oncológica y Reconstrucción de Mama de FALP.



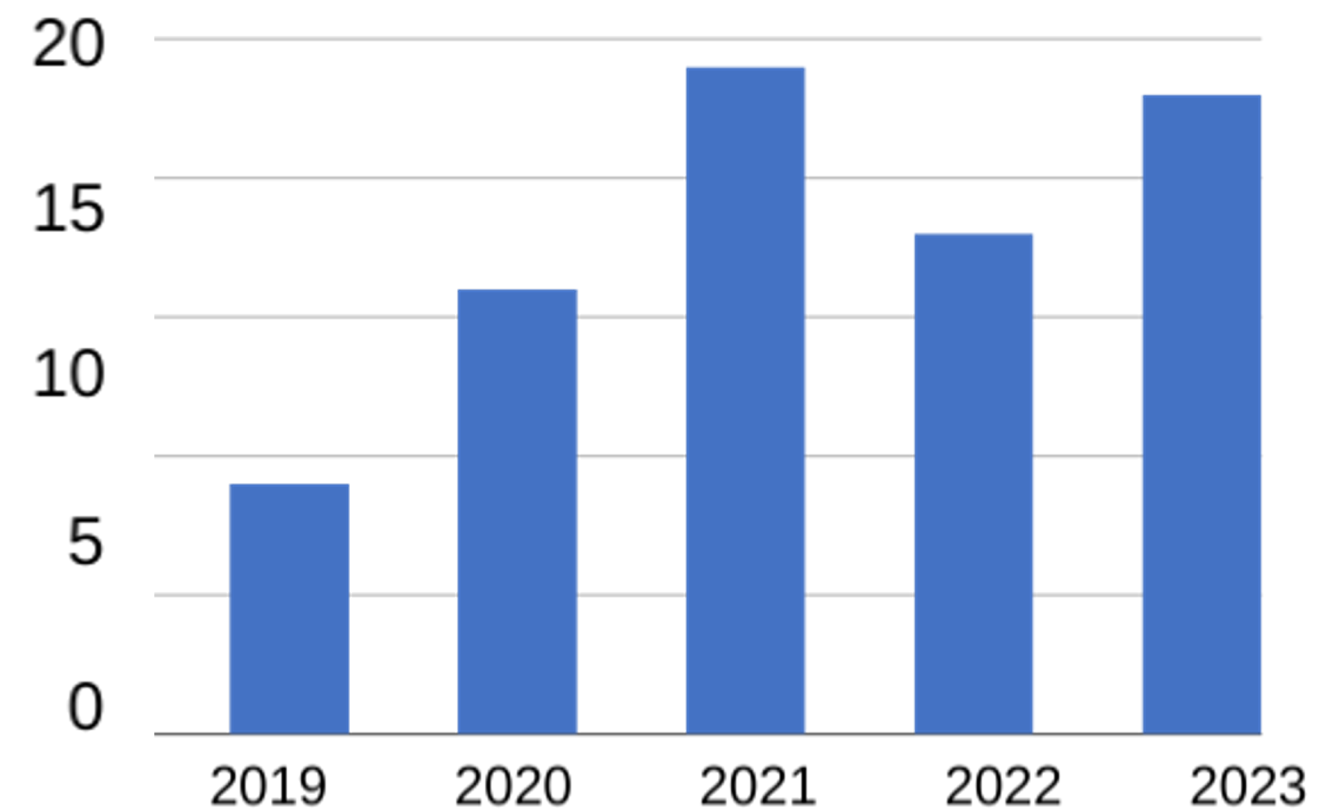
8.- RESEARCH

Number of publications



Average Impact Factor

- Establishment of the Research Department.
- Formulation of the Research Strategic Plan.
- Develop a Translation Research Laboratory and an Epidemiology Unit.
- Fostering a Research Culture within the Institute.



9.- EDUCATION AND TRAINING

- Establishment of the Academic Department.
- Development of New Fellowship Programmes.
- Implementation of a Digital Platform for E-Learning.



Plataforma de Formación Virtual FALP

Log in

Username

Password

Remember username

[Forgotten your username or password?](#)

Cookies must be enabled in your browser [?](#)



How the Accreditation Process Helps Us Improve

Develop new areas and processes to address gaps and alignment with OECI best practices.

Implementation of quality indicators and benchmarks for monitoring continuous improvement.

Foster a mindset focused on anticipating and mitigating risks.

Promoting a research culture within the institute.





FALP CANCER

INSTITUTE

How the accreditation process helps us improve

